

SPUDS Tune Swap 17

Winter Holidays

1. Bleak Midwinter [F] Enid
 2. Sleigh Ride [Bb-G] Frank and Ellen
 3. Very Juene [G] Judy K & Carol W
 4. Solstice Maid [G] Kathryn
 5. Bring a Torch, Jeanette [Un flambeau, Jeanette, Isabelle] [G] Debbie
 6. Gower Wassail [Am] Kathryn
 7. Christmas Day in the Morning [D] Kirsten
 8. The Wexford Carol [G] Kirsten
 9. Ignite [Gmix] Sarah and Bill
 10. Christchurch Bells [C] Steve
 11. Somerset Wassailing [D] John B
 12. Solar Carol [G] Craig
 13. Kas a Bar [Am] Laura
 14. Michael Turner-s Waltz [G] Sandy
- Extras:
Auld lang Syne [D]
Masters of this Hall [Gm] [Female Sailor]

In the Bleak Midwinter

Gustav Holst

The image shows the musical notation for the first two staves of the piece 'In the Bleak Midwinter' by Gustav Holst. The music is written in a single system with two staves. The key signature is one flat (Bb) and the time signature is common time (C). The notation includes notes, rests, and bar lines. Above the notes, chords are indicated: F, C, Dm, Gm, C, F, C, Dm, Gm, C, F on the first staff, and Bb, Dm, F, Dm, C, F, C, Dm, Gm, C, F on the second staff. The piece begins with a repeat sign and ends with a double bar line and repeat dots.

Sleigh Ride

Leroy Anderson

The musical score for "Sleigh Ride" by Leroy Anderson is presented in ten staves. The first two staves are in the key of B-flat major (two flats) and 4/4 time. The third staff changes to the key of D major (two sharps). The fourth and fifth staves return to B-flat major. The sixth staff changes to D major. The seventh and eighth staves return to B-flat major. The ninth and tenth staves change to D major. Chord symbols are placed above the notes on each staff. The score includes repeat signs and first/second endings. The final key signature is D major.

Chord symbols: B \flat , Gm7, Cm7, F7, B \flat , Gm7, Cm7, F7, B \flat , Gm, Cm7, F7, 1 B \flat , D \flat , F7, 2 B \flat , Em7, A7, D, Em7, A7, D, Dm7, G7, C, Cm7, F7, Cm7, F7, B \flat , Gm7, Cm7, F7, B \flat , Gm7, Cm7, F7, B \flat , Gm, Cm7, F7, 1 B \flat , D \flat , F7, 2 B \flat , Gmaj7, E7, Am7, F \sharp 7, Bm, B7, Em, A7, D, F7, B \flat , Gm7, Cm7, F7, B \flat , Gm7, Cm7, F7, B \flat , Gm, Cm7, F7, 1 B \flat , D \flat , F7, 2 B \flat , Em7, A7, D, Em7, A7, D, Dm7, G7, C, Cm7, F7, Cm7, F7.

B \flat Gm7 Cm7 F7 B \flat Gm7 Cm7 F7 B \flat Gm7

Cm7 F7 B \flat D \flat F7 B \flat Gm7 Cm7 F7 B \flat Gm7

Cm7 F7 B \flat Gm7 B7 E7

A7 D7 C7 F7 B \flat

Very Jeune

Hartwin Dhoore

G C Em7 D G C Em7 D C D

C Bm Am D C Bm Am | 1 D G | 2 Am D G

The Solstice Maid

Jay Ungar

Em D Bm C D G B7

Em D C Am7 Bm7 Em

G D7 Bm7 C D7 G B7

Em D C Am7 Bm7 Em

Un Flambeau, Jeannette, Isabella

Bring a Torch, Jeannette, Isabella

*Loreena McKinnett version
(A Midwinter's Night Dream album)
arr. D. Robinson*

Light & Playful

Musical notation for the first piece, 'Un Flambeau, Jeannette, Isabella'. It consists of three staves of music in G major and 3/8 time. The first staff has a key signature of one sharp (F#) and a 3/8 time signature. The melody is written on a treble clef staff. The chords are G, Em, Am, D7, G, Em, D7, G. The second staff continues the melody with chords G, D7, C, G, C, G, D. The third staff has chords Em, D, G, D, Em, D, G, D7, followed by a first ending (1) with chord G and a second ending (2) with chord G.

I Saw Three Ships

Musical notation for the second piece, 'I Saw Three Ships'. It consists of three staves of music in G major and 6/8 time. The first staff has a key signature of one sharp (F#) and a 6/8 time signature. The melody is written on a treble clef staff. The chords are G, D, G, Am, G, D. The second staff has chords G, D, G, Am, G, D, G. The third staff has chords G, Am, G, Am, G.

Un flambeau, Jeanette, Isabelle
 Bring a Torch, Jeanette, Isabella
 (with harmony)

French traditional (17th cent.)

Musical score for 'Un flambeau, Jeanette, Isabelle' in 3/8 time, G major. The score consists of six staves. The first three staves show the melody with chords G, D, G, D, G above the notes. The fourth staff is labeled 'Harmony' and shows a more complex accompaniment with chords G, D, G, D, G. The fifth and sixth staves repeat the melody and accompaniment from the first and third staves respectively.

Gower Wassail

Welsh traditional

Musical score for 'Gower Wassail' in 3/8 time, G major. The score consists of three staves. The first two staves show the melody with chords Am, G, C, Em, Am, (F), Em above the notes. The third staff shows a different accompaniment with chords C, D, Am, Em, Am, Dm, Am, Em, Am above the notes.

Christmas Day ida Morning

trad. Shetland

Chords: D A G Em A A7 D
 D A G Em A A7 D
 Em D G Em A(m) G A(m)

The Wexford Carol

[long pickup, like "Sally in Our Alley"]

Chords: (D) G (D) (Em) D (Bm) (Am)(D6) Em F C Dm D
 G (D) (Em) D (Em) C G7 (C) (G) C6 G
 (G1) Gm(Am) (F) (Gm) F Bb (Gm) Gm (Am) Dm C Dm (D)
 G (D) (Em) D (Bm) Em C G7 (C) Em Gsus G

Ig-Night

© 2013 Bill Quern and Sarah Gowan

Two staves of musical notation for the piece 'Ig-Night'. The first staff contains a melody with a repeat sign at the beginning and end, and a double bar line at the end. The second staff contains a melody with a repeat sign at the beginning and end, and a double bar line at the end. Chord symbols are placed above the notes: G, G, F, G, F, F, G.

www.boxandstringmusic.com

Christchurch Bells

[as a round]

1686

Three staves of musical notation for the piece 'Christchurch Bells'. The first staff contains a melody with a repeat sign at the beginning and end, and a double bar line at the end. The second staff contains a melody with a repeat sign at the beginning and end, and a double bar line at the end. The third staff contains a melody with a repeat sign at the beginning and end, and a double bar line at the end. Chord symbols are placed above the notes: C, F, G, C, F, G, F, G, C.

Somerset Wassail



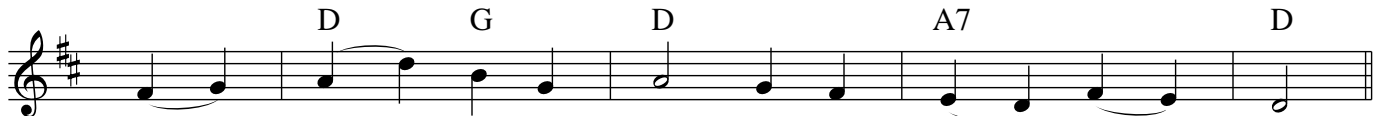
1. Was - - sail and was - - sail, all o - - ver the town!
 2. O mas - - ter and mis - sus, are you all with - - in?
 3. Oh where is the maid with the sil - ver - head - ed pin
 4. There was an old man and he had an old cow,
 5. The girt dog of Lang - port he burnt his long tail



1. The cup it is white and the Ale it is brown;
 2. Pray o - - pen the door and let us come in.
 2. to o - - pen the door and let us come in.
 4. And how for to keep her he did - n't know how.
 5. And this is the night we go sing - - ing was - - sail.



1. The cup it is made of the good ash - en tree;
 2. O mas - - ter and mis - sus a - - sit - ting bu the fire,
 3. O mas - - ter and mis - sus, it is our de - - sire
 4. He built up a barn for to keep his cow warm
 5. O Mas - - ter and mis - sus now we must be gone;



1. And so is the malt of the best bar - - - ley;
 2. Pray think on us poor travel - ers, a - - travel - ing in the mire.
 3. A good loaf and cheese and a toast by the fire.
 4. And a drop or two of ci - - der will do us no harm.
 5. God bless all in this house un - til we do come a - - gain.



For it's your was - - sail and it's our was - - - sail!



and it's joy be to you, and a jol - ly was - - sail!

Solar Carol

Angels We Have Heard on High

Chords for Solar Carol:

Staff 1: G Bm D7 G D G D7 G

Staff 2: G E7 Am D7 G C D& G D G C G D7 G

Solar Carol

(Adam Austill, Court Dorsey, Charlie King, Marcia Taylor)

See the sun how bright it shines, on the nations of the earth
 All who share this thing called life celebrate each day's rebirth
 (cho) So-o-o-o-lar power, inexpensive energy (2x)
 Brother river can you hear how the valley calls you down
 Send your rushing waters near, let the joyful hills resound
 Sister wind we've heard on high sweetly singing o'er the plain
 And the windmills in reply echoing their glad refrain
 How we love complexity when the answer's rather plain
 Join the sun in jubilee, sing with us this joyous strain

Kas a Bar

Florence Glorion

Chords for Kas a Bar:

Staff 1: Am D Am C D

Staff 2: Am G Am G Am G D Em Am

Michael Turner's Waltz

Chords: G, Bm, C, D, G, Bm, C, D, G, C, Am, G, Em, C, Bm, Em, D, G

Auld Lang Syne

Chords: D, Em, A, D, Bm, A, G, D, Em, A, F#7, Bm, A7, D, G, D, Bm, Em, A, G, D, G, Em, D, Bm, Em, A, F#7, Bm, A7, D

Masters of this Hall

The Female Saylor

Chords: Gm, Gm, D, Gm, Cm, D, Gm, Gm, (Eb), Cm, D, Gm, 1 D, Gm, D, 2 D, Gm